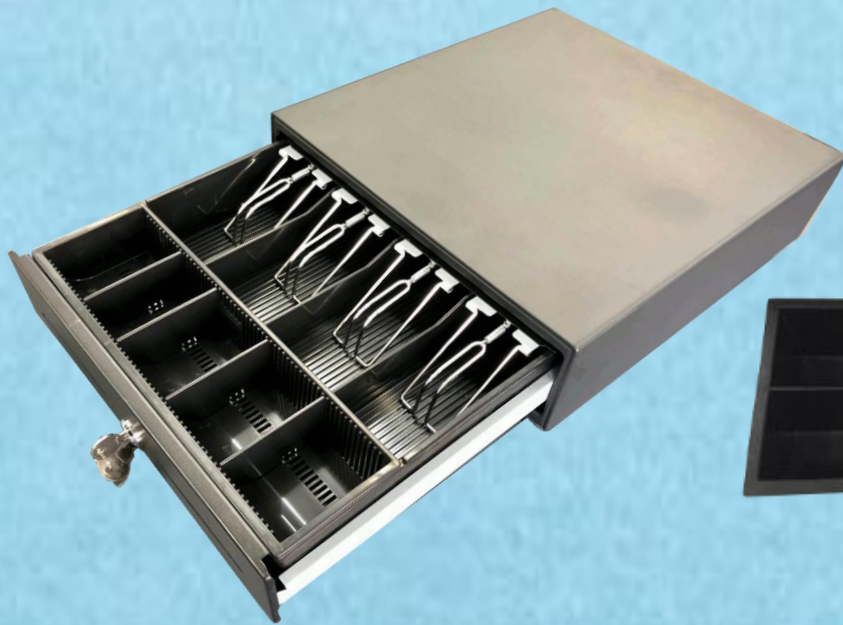


COMPACT SIZE FULL METAL CASH DRAWER NS-330A

FOR SMALL RETAIL APPLICATIONS AND CONVENIENCE STORES

- Dimensions 330 (W) x 335 (D) x 90/104 (H) mm / Net Weight: 4.5Kgs.
- Cash Tray 5C-8C (Removable Coin tray unit) with 3-4 Bills Metal wire Gripper
Optional Euro Cash Tray (8C/6B vertical) is available
- Material SPCC cold rolling steel cash box with SECC-N5 electroplating zinc under plate
- Solenoid DC 12V or 24V, 6P/4C RJ11 standard. RJ12 6P/6C with micro switch as option
- Lock key 3-position key lock Manual Lock and Manual Open
- Front Panel Metal Front Panel with two media slots as standard
- Durability MCBF: 1,000,000 over cycles
- Color Black, Dark Grey, White as standard and customers color option



NS-330A with 5C/4B Cash Tray



8C-Fixed Removable Coin Tray is also available



Removable Cash Tray & Coin Tray



8C/6B Euro Vertical Cash Tray